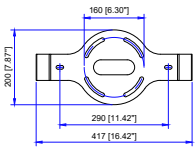
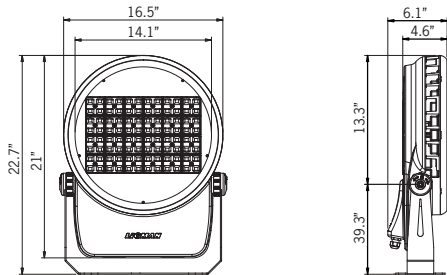


# UQA-50021

## Quantum 3 Large Floodlight



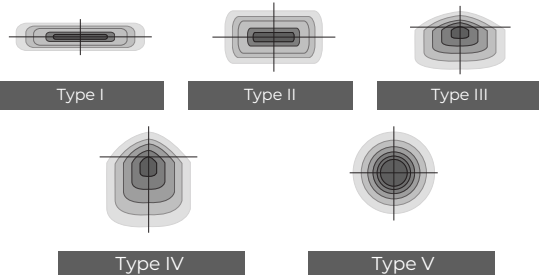
269w LED 27,436 Lumens  
 IP66 · Suitable For Wet Locations  
 IK08 · Impact Resistant (Vandal Resistant)  
 Weight 35.2 lbs



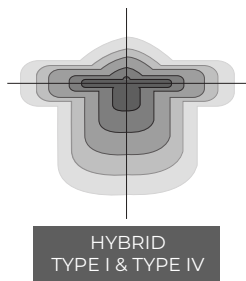
Mounting Detail



Ligman's micro Variable Optical System provides the ability to interchange, mix & rotate optics to provide specific light distributions for optimized spacing and uniformity.



The variable optic system allows for the designer to create hybrid distributions for precise lighting requirements.



### Construction

**Aluminum**  
 Less than 0.1% copper content – Marine Grade 6060 extruded & LM6 Aluminum High Pressure die casting provides excellent mechanical strength, clean detailed product lines and excellent heat dissipation.

**Pre paint**  
 8 step decrease and phosphate process that includes deoxidizing and etching as well as a zinc and nickel phosphate process before product painting.

**Memory Retentive -Silicon Gasket**  
 Provided with special injection molded "fit for purpose" long life high temperature memory retentive silicon gaskets. Maintains the gaskets exact profile and seal over years of use and compression.

**Thermal management**  
 LM6 Aluminum is used for its excellent mechanical strength and thermal dissipation properties in low and high ambient temperatures. The superior thermal heat sink design by Ligman used in conjunction with the driver, controls thermals below critical temperature range to ensure maximum luminous flux output, as well as providing long LED service life and ensuring less than 10% lumen depreciation at 50,000 hours.

**Surge Suppression**  
 Standard 10kv surge suppressor provided with all fixtures.

**BUG Rating**  
 B4 - U0 - G0

**Finishing**  
 All Ligman products go through an extensive finishing process that includes fettling to improve paint adherence.

**Paint**  
 UV Stabilized 4.9Mil thick powder coat paint and baked at 200 Deg C. This process ensures that Ligman products can withstand harsh environments. Rated for use in natatoriums.

### MicroPRIM Finishes

MicroPRIM is Ligman's trade marked decorative powder coating technology that permanently infuses colors, patterns, or imagery directly into the surface of luminaires and poles while providing protections that standard powder coating does not offer.

MicroPRIM finishes include nature-inspired wood grains and stone aesthetics, material-inspired finishes such as brushed metal, concrete, and carbon fiber. Solid colors in Ligman standard colors, as well as any RAL or Pantone color, Decorative patterns, custom imagery and more.

### Coating and Infusion Process

Metal components are pre-treated and powder coated with a proprietary polyurethane-based coating engineered for outdoor architectural use. Decorative patterns or imagery are then permanently infused into the cured powder coat through a heat-based process, creating a durable, integrated finish.

### Performance and Validation

MicroPRIM finishes are suitable for indoor and outdoor applications and meet AAMA2605 architectural coating requirements. Performance is validated through laboratory and real-world testing to ASTM standards for UV exposure, adhesion, abrasion, impact, salt spray, chemical resistance, and graffiti resistance.

All MicroPRIM finishes are backed by Ligman's 10-year warranty.

**Key Performance Attributes**  
 •Anti-graffiti resistance  
 •UV and weather resistance  
 •Scratch and abrasion resistance  
 •Natatorium Rated for installation in corrosive environments)

**Hardware**  
 Provided Hardware is Marine grade 316 Stainless steel.

**Anti Seize Screw Holes**  
 Tapped holes are infused with a special anti seize compound designed to prevent seizure of threaded connections, due to electrolysis from heat, corrosive atmospheres and moisture.

**Crystal Clear Low Iron Glass Lens**  
 Provided with tempered, impact resistant crystal clear low iron glass ensuring no green glass tinge.

**Optics & LED**  
 Precise optic design provides exceptional light control and precise distribution of light.  
 LED CRI > 80

**Lumen - Maintenance Life**  
 L80 /B10 at 50,000 hours (This means that at least 90% of the LED still achieve 80% of their original flux)

**Adjustable surface-mounted technical floodlights. Premium projector solutions with stylish modern design, unique rotary thermal guard and numerous project options.**

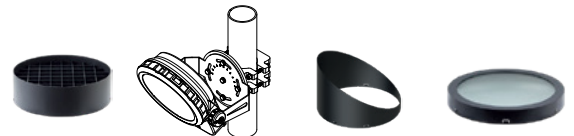
Quantum small and medium LED projector range with a modern and smart design. The high pressure die-cast housings have integrated heat sinks, as well as an internal waterproof control gear housing compartment. The mounting arm is attached to a ratcheting tilting adjustment that is lockable once the desired aiming position has been achieved. This mechanism allows for small incremental adjustments for precision aiming.

This fixture has been designed around powerful high performance LEDs and precision optics so that the luminaire can be used to illuminate various applications from building facades to high multi story surfaces and accents.

This luminaire range is available with RGBW dynamic color changing technology or static white LEDs to give the specifier artistic lighting options within the same unified product family.

Available in Narrow, Medium, Wide and Elliptical light distribution. RGBW full colours render for each LEDs and static white for Color temperature 2700K, 3000K, 3500K and 4000K. Single cable gland entry for wiring is standard. Optional anti-glare louvers are available as an option. Consult factory for available configurations.

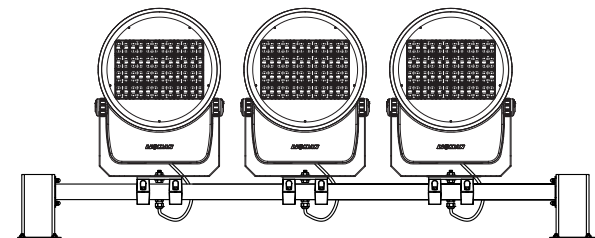
### Additional Options (Consult Factory For Pricing)



A53431 Anti Glare Louvre | PC\*X" Pole Clamp 4-5.5" | A53331 Visor | A51514 Linear Spread Lens



A53531 Anti Glare Hood



RM Rail Mount Option (Number of Floods May Be Specified)

# UQA-50021

## Quantum 3 Large Floodlight



PROJECT		DATE	
---------	--	------	--

QUANTITY		TYPE		NOTE	
----------	--	------	--	------	--

ORDERING EXAMPLE || UQA - 50021 - 269w LED - T2 - W30 - 02 - 120/277v

UQA-50021					
LAMP	BEAM	LED COLOR	FINISH COLOR	VOLTAGE	
269w LED 27,436 Lumens	T1 - Type I Distribution T2 - Type II Distribution T3 - Type III Distribution T4 - Type IV Distribution N - Narrow Beam 10° M - Medium Beam 18° W - Wide Beam 26° VW - Very Wide Beam 70 E - Elliptical Beam 44° x 13°	W27 - 2700K W30 - 3000K W35 - 3500K W40 - 4000K	01 - BLACK RAL 9011 02 - DARK GREY RAL 7043 03 - WHITE RAL 9003 04 - METALLIC SILVER RAL 9006 05 - MATTE SILVER RAL 9006 06 - LIGMAN BRONZE 07 - CUSTOM RAL	120/277v Other (Specify)	

--	--	--	--

### ADDITIONAL OPTIONS

- |   |  |  |
|---|--|--|
| <ul style="list-style-type: none"> <li>F - Frosted Lens</li> <li>DIM - 0-10v Dimming</li> <li>NAT - Natatorium Rated</li> <li>A53431 - Anti Glare Louvre</li> <li>A53331 - Visor</li> </ul> | <ul style="list-style-type: none"> <li>A51514 - Linear Spread Lens</li> <li>A53531 - Anti Glare Hood</li> <li>RM - Rail Mounted (Specify # of Floods)</li> </ul> | <p><b>POLE CLAMPS</b></p> <ul style="list-style-type: none"> <li>PC4 - Pole Clamp 4" Dia</li> <li>PC45 - Pole Clamp 4.5" Dia</li> <li>PC5 - Pole Clamp 5" Dia</li> <li>PC55 - Pole Clamp 5.5" Dia</li> </ul> |
|---|--|--|



### More Custom Finishes Available Upon Request

Consult factory for pricing and lead times

<p><b>MicroPRIM FINISHES</b></p> <ul style="list-style-type: none"> <li>SW01 - OAK FINISH</li> <li>SW02 - WALNUT FINISH</li> <li>SW03- PINE FINISH</li> <li>DF - DOUGLAS FIR FINISH</li> <li>CW - CHERRY WOOD FINISH</li> <li>NW - NATIONAL WALNUT FINISH</li> <li>SU01 - CONCRETE FINISH</li> <li>SU02 - SOFTSCAPE FINISH</li> <li>SU03 - STONE FINISH</li> <li>SU04 - CORTEN FINISH</li> <li>CSM - Custom Image/Pattern</li> </ul>	<p><b>MicroPRIM FINISHES</b></p> <ul style="list-style-type: none"> <li>MP - MAPLE FINISH</li> <li>MHG - MAHOGANY FINISH</li> <li>BH - BEECH FINISH</li> <li>CN - CHESTNUT FINISH</li> <li>WMBL - WHITE MARBLE FINISH</li> <li>MBL - MARBLE FINISH</li> <li>GRNT - GRANITE FINISH</li> <li>BGD - BRUSHED GOLD FINISH</li> <li>BBRZ - BRUSHED BRONZE FINISH</li> <li>CAMO - CAMOUFLAGE FINISH</li> </ul>	<ul style="list-style-type: none"> <li>MP01 - MicroPRIM RAL 9011 Black (Glossy)</li> <li>MP02 - MicroPRIM RAL 7043 Dark Grey (Glossy)</li> <li>MP03 - MicroPRIM RAL 9003 White (Glossy)</li> <li>MP04 - MicroPRIM RAL 9006 Metallic Silver (Glossy)</li> <li>MP05 - MicroPRIM RAL 9006 Matte Silver (Matte/Textured)</li> <li>MP06 - MicroPRIM Ligman Bronze (Glossy)</li> <li>MP07 - MicroPRIM Custom Color (Glossy)</li> </ul>
--	---	--



MicroPRIM Finish

